

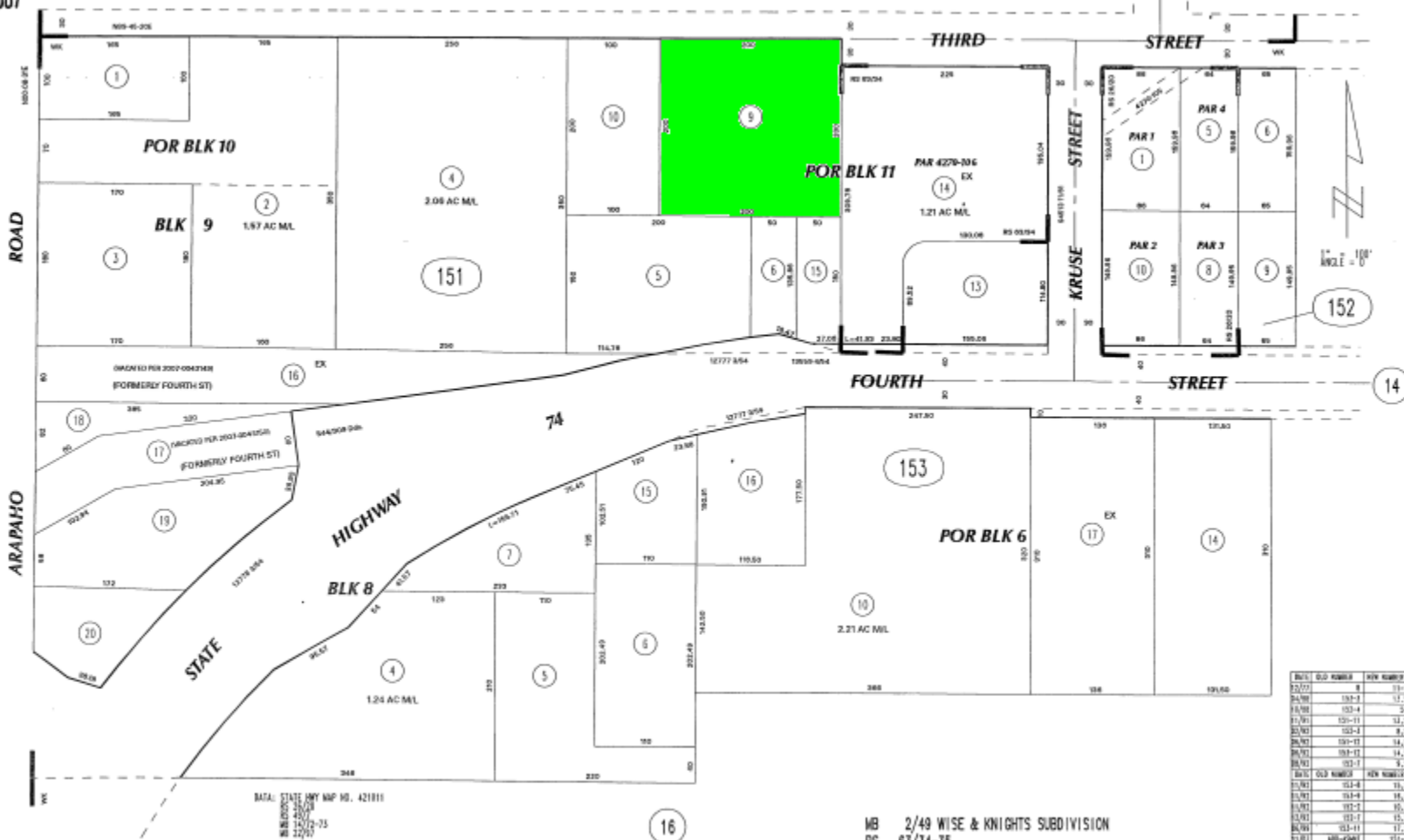
THIS MAP WAS PREPARED FOR ASSESSMENT PURPOSES ONLY. NO LIABILITY IS ASSUMED FOR THE ACCURACY OF THE DATA SHOWN. ASSESSOR'S PARCEL MAY NOT COMPLY WITH LOCAL LOT-SPLIT OR BUILDING SITE ORDINANCES.

POR. NW 31 T. 4S. R. 3W
CITY OF PERRIS

T.R.A. 008-044

313-15
16-9

NOV 29 2007



326
23

BASIL STATE MAP NO. 421811
M.B. 2007-01-25
2007-01-25

ASSESSOR'S MAP BK313 PG.15
Riverside County, Calif. J.C.P.

MB 2/49 WISE & KNIGHTS SUBDIVISION
RS 63/34-35
RS 26/20

PARCEL	OLD NUMBER	NEW NUMBER
22/27	158-8	158-12
24/30	158-9	158-13
15/38	153-4	3-7
17/39	153-11	14-18
27/43	153-1	8-11
28/43	153-12	14-15
30/43	153-13	14-15
31/43	153-14	14-15
32/43	153-15	14-15
33/43	153-16	14-15
34/43	153-17	14-15
35/43	153-18	14-15
36/43	153-19	14-15
37/43	153-20	14-15

Nov 2007